

Susan materials Co., Ltd.

Sucryl • Suwacryl • Suwatan • Subloc



Sucryl®

Solvent-borne acrylic resins

Sucryl® is widely used in industries such as automotive, construction, plastic and wood coating as well as PSA (pressure sensitive adhesives). Based on advanced synthesis technology, Sucryl® reflects the diverse needs of customers.



Suwacryl®

Water-borne acrylic resins

Suwacryl® is divided into pure acrylic emulsion, styrene-acrylic emulsion, vinyl acrylic emulsion and vinyl acetate emulsion based on monomer composition. Suwacryl® is an environmentally acrylic resin with low VOC.

Suwatan®

Polyurethane dispersion resins

Suwatan® is a high performance water borne polyurethane dispersion. Suwatan® is used in a variety of coating applications ranging from surface reinforcement, binders for water borne ink, paper, wood and metal.



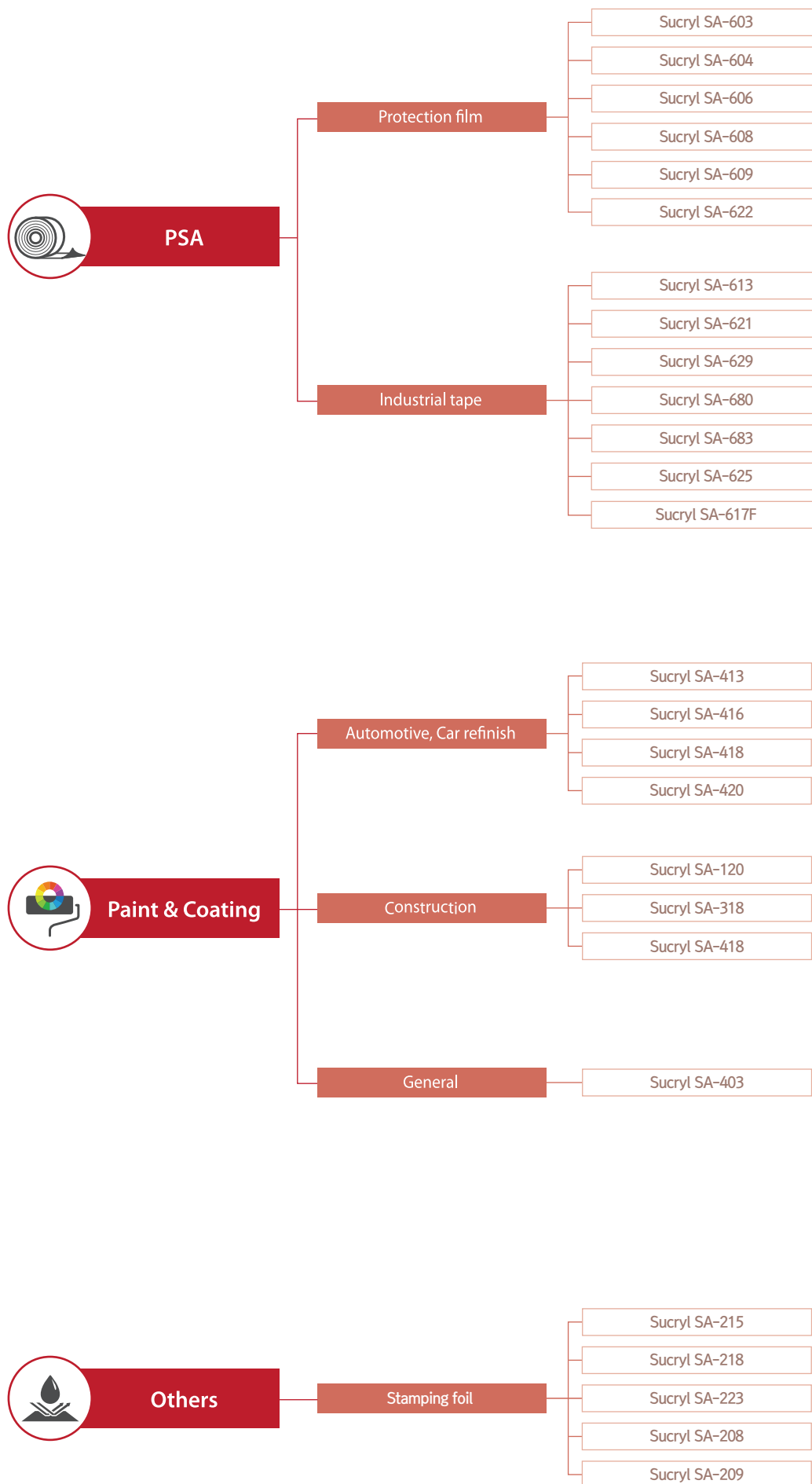
Sucryl[®]

Solvent-borne acrylic resins

Susan material's Sucryl is widely used in industries such as automotive, construction, plastic and wood coating as well as PSA (pressure sensitive adhesives). Based on Susan Polymer's advanced synthesis technology, Sucryl reflects the diverse needs of customers.



Selection guide for Sucryl



Technical Informaion



PSA (Pressure Sensitive Adhesive)

Grade	N/V (%)	Thickness (μm)	Viscosity (cps)	Peel strength (gf/inch)	Hardner	Ratio(phr)	Features & Application
SA-603	47 ± 2	5~10	4,500±500	20±10	SAX-804	0.2~0.4	Low peel strength, embossing, PE Protective film
SA-604	44 ± 2	5~10	2,500±500	80±10	SAX-807	3~4	Cohesion, removal, PE protective film, UV DECO sheet
SA-606	40 ± 2	5~10	2,000±500	30±10	SAX-802	2~3	Soft peeling, PE protective film, UV DECO sheet
SA-608	40 ± 2	5~10	7,000±1,000	15±10	SAX-804	0.2~0.4	Low peel strength, embossing, PE Protective film
SA-609	40 ± 2	10	2,000±500	15±5	SAX-802	2~3	Soft peeling, low peel strength, PE, PET film, electric carrier
SA-613	40 ± 2	25	5,000±1,000	1,200±200	X		1 component type , Excellent workability
SA-621	35 ± 1	40	3,500±500	1,400±200	SAX-805	0.1~0.3	High cohesion, heat resistance, adhesion to glass, nail sticker
SA-622	34 ± 2	10	3,500±500	130±20	SAM-777	5~7	Cohesion, heat resistance, plasticizer resistance, PVC protective film
SA-629	40 ± 2	25	2,300±500	700±100	SAX-805	1~2	Middle adhesion, cohesion, heat resistance, PET, PEEK film
SA-680	40 ± 2	25	2,500±500	1,500±200	SAX-801	1~2	Strong adhesion(PE,PP), non-woven, PE foam double-sided tapes
SA-683	40 ± 2	25	2,500±500	1,300±200	SAX-805	1~2	Cohesion, non-toxic to skin , non-woven , medical tapes
SA-625	45 ± 2	25	7,500±1,500	1,800±100	X		1 component type , Excellent workability
SA-617F	35 ± 2	25	5,000±1,000	2,000±100	SAX-805	0.5	Strong adhesion(PE,PP), non-woven, PE foam double-sided tapes



Paint & Coating

Grade	N/V (%)	Tg (°C)	Viscosity (#G)	Color (#G)	OH(%) (Solution)	Solvent	Features & Application
SA-120	50 ± 1	64	Z~Z3	1 ↓	X	TOL	Fast drying, excellent hardness, top coat for concrete
SA-318	60 ± 1	-3	Z~Z1	1 ↓	1	TOL,BA	Flexibility, weatherability, adhesion, Floor top coating
SA-403	52 ± 1	64	V~Y	1 ↓	1.15	TOL,BA	Fast drying, workability, top coating for plastics & metal
SA-413	45 ± 2	73	Z3~Z5	2 ↓	0.5	Tol,Ko#100	Good adhesion, weatherability, automobile, PP plastic(1K, 2K)
SA-416	60 ± 1	90	T~X	1 ↓	2.2	TOL,BA	High gloss, excellent hardness, pigment dispersibility, automobile refinish
SA-418	70 ± 2	51	V~Y	1 ↓	2.3	BA,CA	High gloss, high build and solid, automobile refinish
SA-420	60 ± 1	80	V~X	1 ↓	1.5	XY	High gloss, excellent hardness, scratch-ability, automobile refinish



Others

Grade	N/V (%)	Tg (°C)	Viscosity (cps)	Color (#G)	OH(%) (Solution)	Solvent	Features & Application
SA-215	60 ± 1	20	2,000±1,000	1 ↓	2.4	BA	Binder for stamping foil, 2-Component Colorants
SA-218	47 ± 1	65	5,000±1,000	1 ↓	X	TOL	Binder for stamping foil, Protective coatings
SA-223	45 ± 1	18	5,000±1,000	1 ↓	X	EA,MT	Binder for stamping foil, For adhesives
SA-208	50 ± 1	105	8,000~11,000	1 ↓	X	XY	Binder for stamping foil, For Plastic and Film coatings
SA-209	40 ± 1	118	1,000±500	1 ↓	X	MEK	Binder for stamping foil, For Plastic and Film coatings

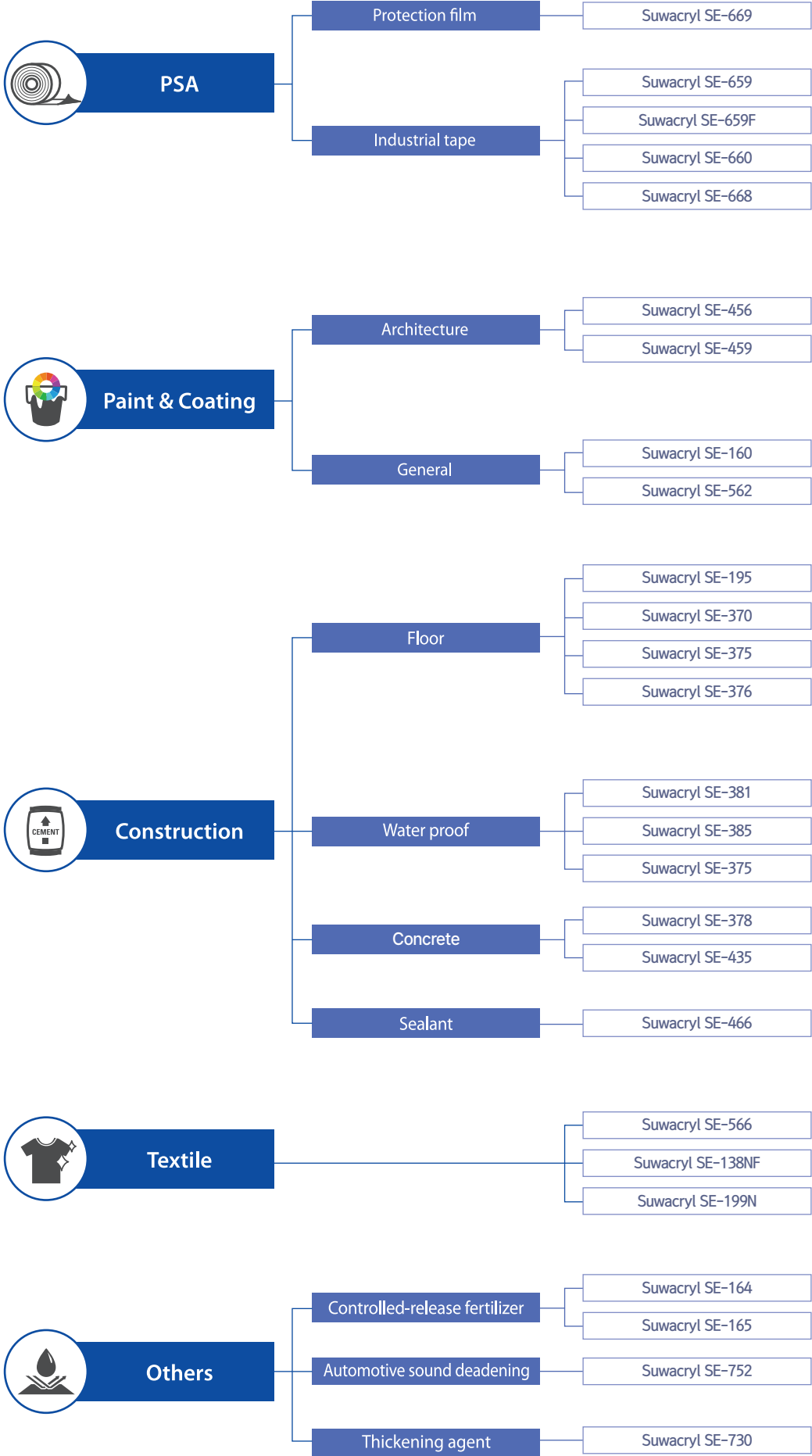
Suwacryl[®]

Water-borne acrylic resins

Susan material's Suwacryl is divided into pure acrylic emulsion, styrene-acrylic emulsion, vinyl acrylic emulsion and vinyl acetate emulsion based on the monomer composition. Suwacryl is an environmentally friendly acrylic resin with low VOC. Suwacryl is mainly used for interior and exterior water-borne cement paint, stone paint, metal & can paint, wood coating, elastic coating, cement water-proofing material and architectural cement additive.



Selection guide for Suwacryl



Technical Informaion



PSA (Pressure Sensitive Adhesive)

Name	N/V (%)	pH	Viscosity (cps)	Tg (°C)	Peel strength (gf/inch)	Features & Application
SE-659	60 ± 2	8 ± 1	3,000~6,000	-52	1,000~1,400	Heat resistance, leveling, weatherability, durability, double-sided tape, label sticker
SE-659F	60 ± 2	8.5 ± 0.5	9,000~13,000	-52	800~1,000	High tackiness, good transparency and durability
SE-660	65 ± 2	8 ± 1	15,000~20,000	-49	1,600~2,000	Excellent adhesion, freeze-thaw stability, screen printing, PVC
SE-668	58 ± 2	7.5 ± 0.5	10,000~14,000	-40	400~600	No skin transfer, good removable, medical tapes, patches
SE-669	45 ± 2	8.5 ± 0.5	< 100	-37	50~100	Very low adhesion(2K), leveling, workability, PVC, PE protective film



Paint & Coating

Name	N/V (%)	pH	Viscosity (cps)	Tg (°C)	Hardness	Features & Application
SE-160	50 ± 1	8 ± 1	1,000~2,000	17	H	Excellent corrosion resistance and compatibility with inorganic resin, metal, wood
SE-456	50 ± 1	8 ± 1	1,000~3,000	10	M~H	Eco-friendly, high gloss, water resistance, excellent adhesion, interior paint binder
SE-459	45 ± 1	8 ± 1	3,000~4,000	8	M	High gloss, water resistance and durability, Exterior paint binder
SE-562	45 ± 1	8 ± 1	3,000~4,000	-44	FF	Excellent pigment compatibility, excellent adhesion, wallpaper(base)

☆ Film hardness

FF : Very soft, F : Soft, M : Medium, H : Hard, HH : Very hard



Construction

Name	N/V (%)	pH	Viscosity (cps)	Tg (°C)	Hardness	Features & Application
SE-195	38 ± 1	8 ± 1	<100	44	HH	Floor polish
SE-370	47± 2	8 ± 1	<200	-6	M	High gloss, good film formation, workability and adhesion(low VOC)
SE-375	50± 1	8 ± 1	<200	-8	M	Excellent dispersibility, alkali resistance, water resistance, workability, self-leveling cement floor
SE-376	50± 1	8 ± 1	<200	-8	M	Primer for plant, restaurant and storage floor
SE-378	47± 1	8 ± 1	<200	-6	M	Binder for color concrete
SE-381	55± 1	8 ± 1	200~1,000	-23	F	Excellent adhesion, freeze-thaw stability, excellent abrasion resistance, waterproof resin for water-borne acrylic urethan containaing surface(curable at room temperature)
SE-385	55± 1	8 ± 1	5,000~7,000	-1	M	Excellent dispersibility and workability, aluminum and phenol foam adhesion waterproof resin for cement-containing inorganic elastic surface(wall)
SE-435	30± 1	8 ± 1	<300	0	M	Excellent adhesion, chalking resistance, concrete surface treatment(primer)
SE-466	60± 1	8 ± 1	2,000~4,000	-19	F	Excellent elasticity, chemical and mechanical stability, no adhesion, crack repair, sealant

☆ Film hardness

FF : Very soft, F : Soft, M : Medium, H : Hard, HH : Very hard



Textile Printing

Name	N/V (%)	pH	Viscosity (cps)	Tg (°C)	Hardness	Features & Application
SE-566	60± 1	8 ± 1	2,000~4,000	-19	F	Excellent pigment wettability, good adhesion and soft touch, hot melt binder, foamed binder)
SE-138NF	40± 1	8 ± 1	<200	-29	F	Excellent flexibility, adhesion and laundering resistance, eco-friendly, textile printing
SE-199N	46± 1	8 ± 1	500~1,500	-26	F	Acrylic rubber binder

☆ Film hardness

FF : Very soft, F : Soft, M : Medium, H : Hard, HH : Very hard



Others

Name	N/V (%)	pH	Viscosity (cps)	Tg (°C)	Hardness	Features & Application
SE-164	45± 1	9 ± 1	50~300	27	H	Excellent workability and water resistance, slow released fertilizer(1st coating binder)
SE-165	35± 1	9 ± 1	20~50	80	H	Excellent anti-blocking, anti-floating in water, slow released fertilizer(2nd coating binder)
SE-730	28 ± 1	3 ± 1	<100	-18	M	Excellent sag resistance and workability, thickener(alkali swellable)
SE-752	50± 1	8 ± 1	200~800	5	M	Sound deadener base emulsion for Electric Trair floor

☆ Film hardness

FF : Very soft, F : Soft, M : Medium, H : Hard, HH : Very hard

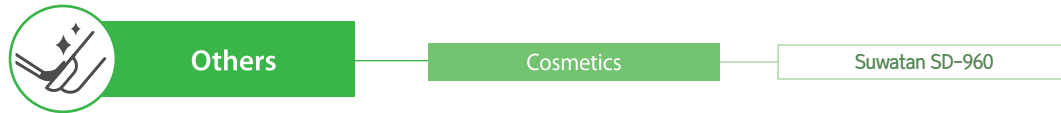
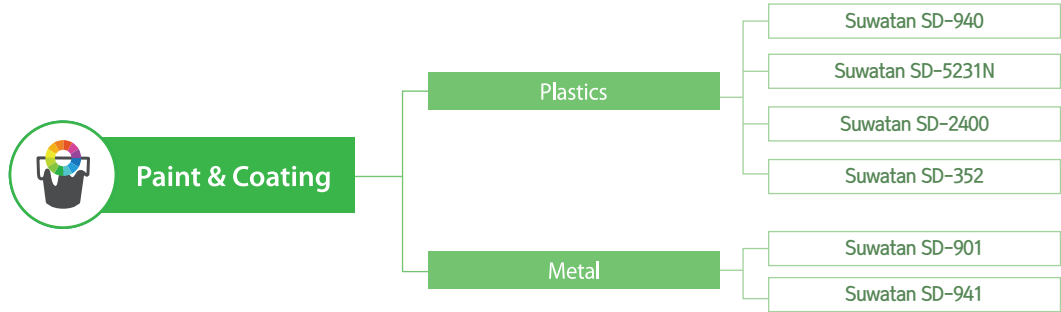
Suwatan[®]

Polyurethane dispersion resins

Susan material's Suwatan[®] is a high performance water borne polyurethane dispersion. Suwatan is used in a variety of coating applications ranging from surface reinforcement, binders for water borne ink, paper, wood and metal.



Selection guide for Suwatan



Technical Informaion



Paint & Coating

Name	N/V (%)	pH	Viscosity (cps)	Solvent (%)	Elongation at break (%)	Tensile Strength (N/mm ²)	100% Modulus (N/mm ²)	Hardness	Feature & Applications
SD-901	30 ± 1	8 ± 1	<200	NEP	185	0.3	0.3	H	A high-performance aqueous urethane coating for metals and plastics, forming a tough yet flexible film that offers strong adhesion along with excellent durability (corrosion and chemical resistance) and anti-yellowing properties.
SD-940	32 ± 1	8 ± 1	<200	NMP	183	12.6	10.2	H	Excellent adhesion, chemical resistance, water resistance, metal surface and plastic coating
SD-941	32 ± 1	8 ± 1	<500	NMP	217	1.9	1.0	H	Excellent adhesion and slip, weatherability, water resistance and corrosion resistance, metal surface and plastic coating
SD-2400	32 ± 2	8.5 ± 1	<200	NMP	307	6.8	2.5	H	A high-performance, non-yellowing waterborne polyurethane that delivers outstanding adhesion and durability on plastics and metals resistant to chemicals, water, and scratches, with fast drying and easy application at room temperature
SD-352	30 ± 1	8 ± 1	<100	NMP	235	10.1	5.3	H	Acrylic urethane dispersion, excellent water resistance, weatherability, wood, metal, plastic coating
SD-5231N	32 ± 1	8 ± 1	<200	NMP	421	1.2	0.7	H	Excellent adhesion, weatherability, water resistance and corrosion resistance, metal surface and plastic coating



Textile Printing

Name	N/V (%)	pH	Viscosity (cps)	Solvent (%)	Elongation at break (%)	Tensile Strength (N/mm ²)	100% Modulus (N/mm ²)	Hardness	Feature & Applications
SD-910	30 ± 1	8 ± 1	<500	DPDM	515.0	35.2	3.8	M	An anionic water-dispersed, non-yellowing polyurethane resin with excellent anti-corrosion, chemical, and water resistance, used for coating metal, aluminum alloys, plastics, and paper.
SD-920	35 ± 1	9 ± 1	<200	DPDM	413.0	35.9	9.9	M	Excellent adhesion, water resistance, top coating (paper, wood, metal)
SD-817	29 ± 1	9 ± 1	<100	Free	629.0	9.5	1.8	F	Excellent adhesion and pigment wetting, adhesive sponge, textile coating



Others - Cosmetics

Name	N/V (%)	pH	Viscosity (cps)	Solvent (%)	Elongation at break (%)	Tensile Strength (N/mm ²)	100% Modulus (N/mm ²)	Hardness	Feature & Applications
SD-960	31 ± 1	8 ± 1	400-1,000	DPDM	183.0	12.6	10.2	H	Excellent adhesion and gloss, water resistance (eco-friendly), cosmetic (manicure) coating

☆ Film hardness

FF : Very soft, F : Soft, M : Medium, H : Hard, HH : Very hard

☆ We are a research and development company, so if you have a product you want other than the above, please contact us by e-mail

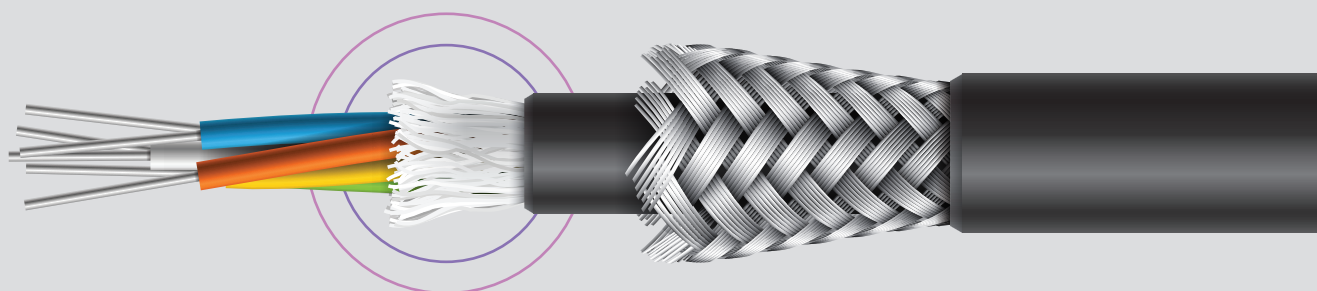
Subloc®

Liquid type Super Absorbent Polymer

Susan material's Subloc is an absorbable polyacrylate polymer. When it cured at a proper condition, it will immediately swell more than 150 times its own weight. The solution is transparent and non-ionic polymer, and should have application in swellable coating in liquid form onto any substrates, i.e., water blocking in cables. It is also applicable as an absorber for water borne related applications such as ink-jet print coating.

Properties

- Type : Sodium polyacrylate
- Solid Content : Approx. 30% by Weight
- Viscosity (Brookfield LVT) : Approx. 1,000 cps
- Specific Gravity @ 25°C : 1.06g/cc
- Flash Point (°C) : > 100
- Residual Acrylic Acid : Max 0.2%



Powder SAPs

Advantages

- Consistency on absorbency
- High gel strength/high permeability
- Particles size is controllable
- Good safety and low toxicity (Best fit for personal hygiene)

Disadvantage

- Applications are limited due to only powder type available
- Potential inhalation risky from the fines
- Not applicable on the surface of flexible substrates such as films, fiber, yarn

Powder SAPs vs. Liquid SAPs

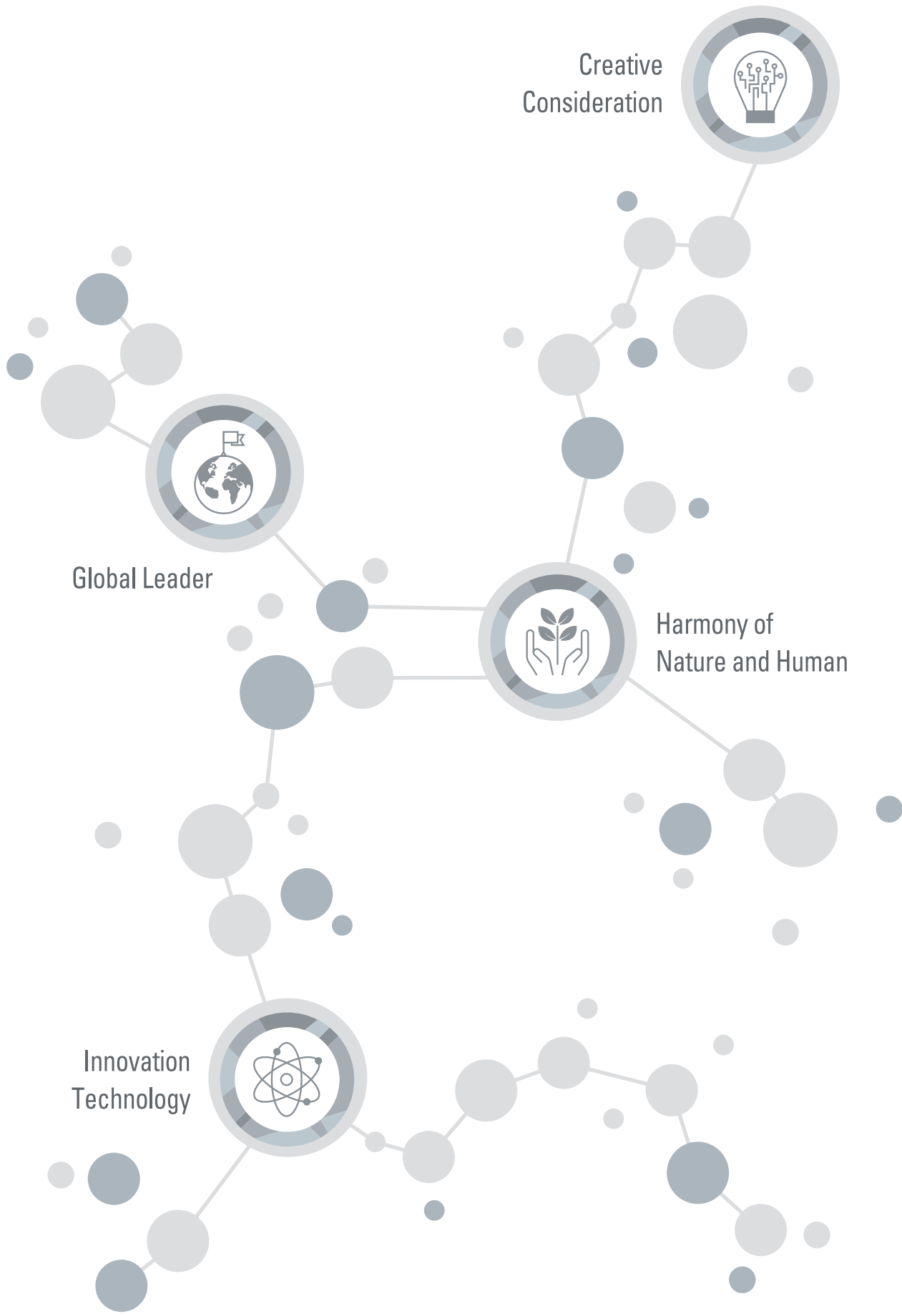
Liquid SAPs

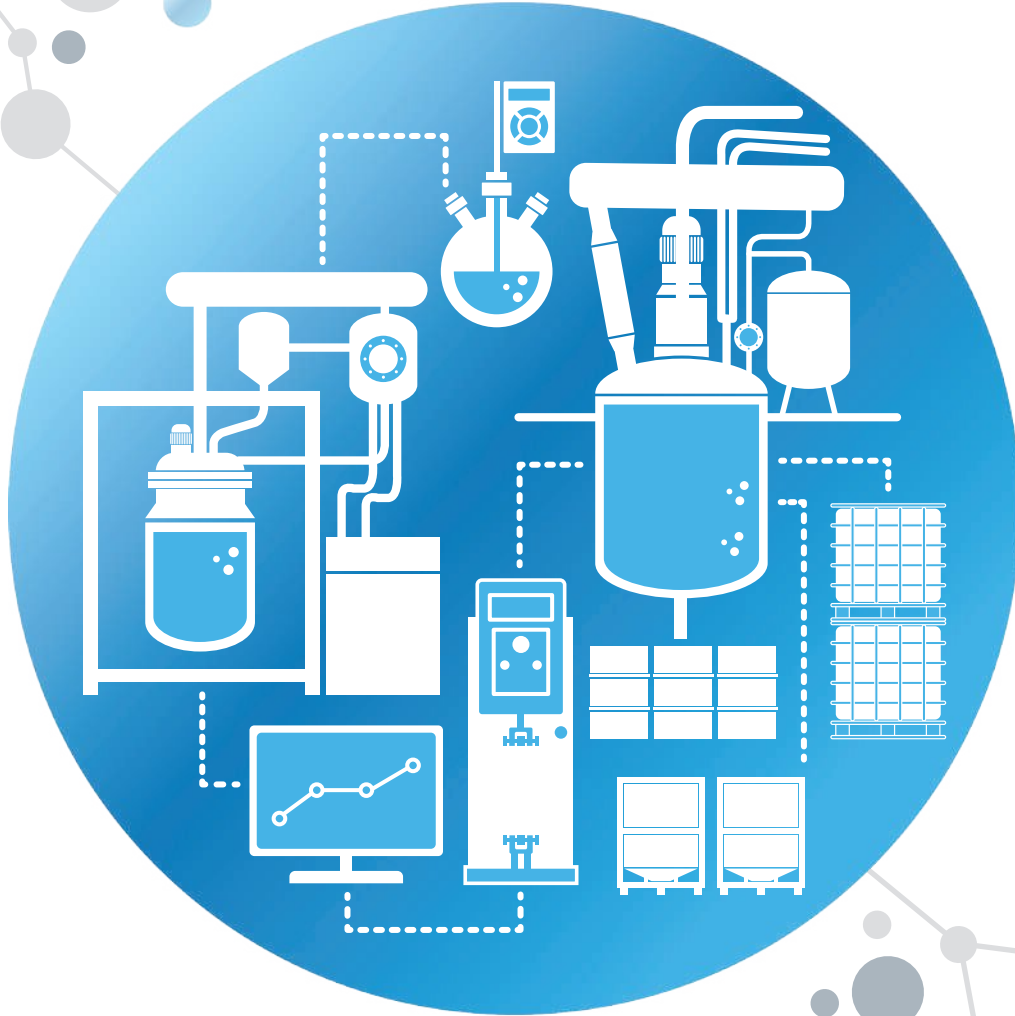
Advantages

- No limitation on the form/shapes of substrates
- Broad applications because of easy to blend with other solutions
- Easy control on absorbency by coating thickness control

Disadvantage

- Inconsistency on absorbency
- Required thermally stable substrates
- Short shelf-life when mixed with external X-linker





susan materials

Susan materials is a company specializing in polymer synthesis, offering products such as Sucryl, Suwacryl, Suwatan and Subloc. Susan Polymer is committed to customer satisfaction by developing new products with innovative new ideas. All product manufacturing processes are managed with thorough management and constantly making efforts to create products that customers can trust. We will do our best to be one of the best chemical companies in the world.

• Tel : +82-31-683-4001 • Fax : +82-31-683-4006 • Email : Contact@susanmat.com
• Add : 55, Deurimsandan 7-ro, Cheongbuk-eup, Pyeongtaek-si, Gyeonggi-do, Republic of Korea